

1-day pass for unlimited travel on public buses for foreign visitors

# VISIT MIYAZAKI BUS PASS

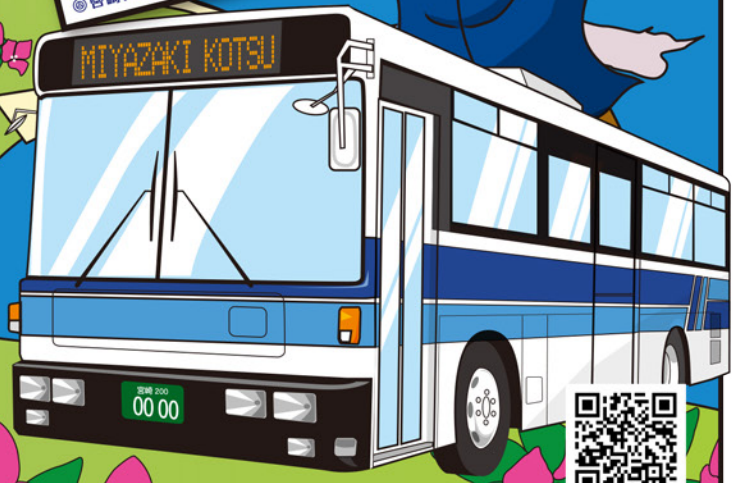
1 Pass = 1,500 yen

Miyazaki Prefecture is so close!

- Seoul ⇄ Miyazaki approx. 100 min.
- HongKong ⇄ Miyazaki approx. 200 min.
- Taipei ⇄ Miyazaki approx. 120 min.
- Osaka⇄Miyazaki approx. 60 min
- Fukuoka⇄Miyazaki approx. 45 min
- Tokyo (Haneda)⇄Miyazaki approx. 90 min.
- Nagoya⇄Miyazaki approx. 70 min.



## MAP OF MIYAZAKI PREFECTURE



[http://www.miyakoh.co.jp/bus/visit\\_miyazaki\\_bus\\_pass/](http://www.miyakoh.co.jp/bus/visit_miyazaki_bus_pass/)

Free sight seeing app is now available for visitors!!

## DIG JAPAN!

App for strategic travel planning in Miyazaki!

- 1 Complete up-to-date information matching the season and area for a real "Miyazaki experience."
- 2 Smooth-running downloadable app that works both online and offline.
- 3 Search → Go → Enjoy!! Worry-free excitement in one application.

Download on the App Store | Google play

<http://www.maple.co.jp/digjapan/jp/>

Enjoy Miyazaki with a bus tour!

## Sightseeing Bus

Fee: 5,000 yen per adult (lunch included)

Enquiry: +81-985-52-7111  
(OPEN)9:00a.m.~7:00p.m.  
<http://www.miyakoh.co.jp/bus/kashikiri/teiki.html>

Luggage-free tour service

## Explore Miyazaki directly from the airport without luggage!

Location: Miyazaki Bougainvillea Airport

Services include

- 1 Luggage-free tour  
Your luggage will be delivered to your hotel!
- 2 Temporary luggage storage  
One-day luggage storage available!
- 3 Wi-Fi Rental  
Wi-Fi rental service available at the airport!

[http://www.miyazaki-airport.co.jp/smooth\\_sightseeing/](http://www.miyazaki-airport.co.jp/smooth_sightseeing/)

# VISIT MIYAZAKI BUS PASS

**One-day unlimited travel pass on public buses for foreign visitors**

\*Not available for highway/express bus routes that overlap other prefectures, the Nobeoka/Miyazaki line, the Miyazaki/Takachiho line, regular sightseeing buses, or community buses.



**VISIT MIYAZAKI BUS PASS**  
1 Pass = 1,500 yen

Please write the date to use this pass

DATE OF TRAVEL	Year	Month	Date
	20		

\*This pass is good only for the above date.

NAME

DATE ISSUED

EXPIRATION DATE ONE MONTH FROM THE DATE ISSUED

**INSTRUCTIONS**

- This pass is for only the guests and tourists with foreign passports(excluding the "Permanent Residents"). Please present your passport and travel documents to prove your stay is temporary (such as round trip airplane ticket, trip itinerary etc.) at the time of purchase.If you are foreign students,please present your residence card from Immigration Bureau of JAPAN(your residence is "Miyazaki prefecture" and Status of Residence is "study abroad").
- Please write name at the time of the purchase and the date to use this pass when the traveling date is decided.
- This pass is good for all the routes Miyazaki Kotsu operates, but not for highway/express bus routes that overlap other prefectures, the Nobeoka/Miyazaki line, the Miyazaki/Takachiho line, regular sightseeing buses, or community buses.
- Please show the travel dates on the back of this pass to bus attendant(s) when you exit. \*Passes without travel dates are invalid.
- Refunds are available at the bus center in Miyazaki Station, Miyazaki City Tourist Information Center, and the Bus Information Desk at Miyazaki airport if before the scheduled travel date or if the pass has no travel date. (a service fee of 100 yen will be charged)
- If Miyazaki Kotsu discovers any inappropriate acts, such as use by a person with different name, the pass will be immediately confiscated and revoked in addition to a charge of double for the travel route.
- If lost, passes will not be reissued.

**1 Pass = 1,500 yen**

This pass is for only the guests and tourists with foreign passports(excluding the "Permanent Residents"). Please present your passport and travel documents to prove your stay is temporary (such as round trip airplane ticket, trip itinerary etc.) at the time of purchase.If you are foreign students,please present your residence card from Immigration Bureau of JAPAN(your residence is "Miyazaki prefecture" and Status of Residence is "study abroad")



Map of Miyazaki Bougainvillea Airport

- Miyazaki Airport - Bus Information Desk
- Miyazaki Airport Information Counter

Miyazaki Airport Information Bus Information Desk

Arrivals

Miyazaki Airport Railway Station

Buy bus pass here!

99 Bus Stop to Miyako City/ Miyazaki Railway Station/Kobayashi  
100 Bus Stop to Saito/Nichinan/Obi  
101 Bus Stop to Miyakonojo  
102 Bus Stop to Seagaia/ Nobeoka

Map of Miyazaki Train Station

- Miyazaki Railway Station - Miyazaki City Tourist Information Center
- Miyazaki Railway Station - Bus Center

Miyazaki Railway Station Bus Center Miyazaki City Tourist Information Center

Richmond Hotel Convenience Store Miyazaki Science Museum

PARKING LOT HOTEL

Taxi Stand East Exit Gate MIYAZAKI Railway Station

Buy bus pass here! Buy bus pass here!

71 Bus Stop to AEON Shopping Center/Heiwadai Park  
A ~ C Highway Bus Stop

KITEN Building JR Kyushu Hotel MIYAZAKI Toyoko Inn JR Building Budget Car Rental

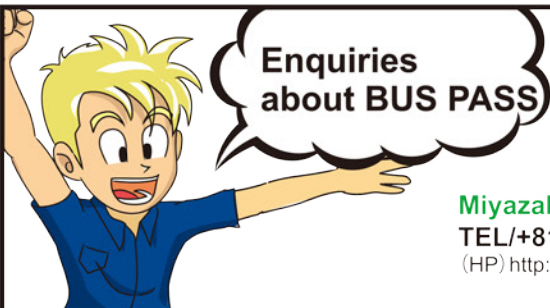
Nippon Car Rental Police Box Oryx Car Rental Times Car Rental

72 Bus Stop to Miyako City/ South Miyazaki Railway Station/ikme Area  
73 Bus Stop to Miyazaki City  
74 Bus Stop to Miyazaki Airport/ Kobayashi/Miyakonojo/ Nichinan, Obi/'Himuka' Highway Bus to Nobeoka

Ticket Reservation Office of JR Taxi Stand

- Miyazaki Kotsu Tachibana-dori Branch
- Miyazaki Kotsu Miyako City Branch (Miyako City Bus Center)
- ANA Holiday Inn Resort Miyazaki, Front Desk
- Miyazaki Kanko Hotel, Front Desk
- Phoenix Seagaia Resort Activity Center
- Hotel Route-Inn Miyazaki, Front Desk
- Air Line Hotel, Front Desk

- Miyazaki Kotsu Nobeoka Branch (Nobeoka Bus Center)
- Miyazaki Kotsu Takachiho Branch (Takachiho Bus Center)



**Miyazaki Kotsu Bus Customer Information Center**  
TEL/+81-985-32-0718 (OPEN) 9:00~18:00  
(CLOSED) Saturdays, Sundays, holidays, and during New Year's holiday  
(HP) <http://www.miyakoh.co.jp/>



**Miyazaki Railway Station - Miyazaki City Tourist Information Center**  
TEL/+81-985-22-6469 (OPEN) 9:00~18:00 (CLOSED) January 1st, 2nd  
(HP) <http://www.miyazaki-city.tourism.or.jp/en/infocenter.html>

